

WINNER EXCELLENCE AWARD 2013

SCHOOL OF REAL LIVING p.25

# realiving

JANUARY/FEBRUARY 2014

home | ideas | shopping | food

## chillout

**STYLISH INTERIOR  
LOOKS YOU'LL LOVE**

**FRESHEN UP  
FACELIFTS FOR  
EVERY ROOM  
IN THE HOME**

**COLOUR  
TRENDS  
HOW TO  
MAKE THEM WORK**

**HOTEL STYLES TO STEAL** (and we don't mean the little soaps)

# SIGNATURE STYLE

A Melbourne-based designer creates the ultimate beach house – a **perfectly resolved design** with materials that will only get better with age



#### Laidback & lived-in

When designer Sharen Joel created her beachside weekendender in Sorrento, Victoria, a no-fuss vibe and beautiful materials that would blend with the location were key.

**Warm + cool**

In the kitchen/dining area, vintage tan leather Frederica chairs add warmth to the cool white and grey scheme. →





**Cosy setting**

A Jetmaster fireplace in the room-dividing joinery is the focal point of the living area. Next to it is a Borge Mogensen "Spanish" chair while a pair of Kaare Klint "Safari" chairs sit opposite the slipcovered sofa.

A HOLIDAY HOUSE SHOULD BE a place where you can turn up and chill out, then lock up and leave. Low-maintenance materials, a restful palette and an easy-to-live-in design are the keys to a relaxing home away from home. For Shareen Joel of Shareen Joel Design and Share Design, a lived-in feel was of utmost importance, despite her weekender on Victoria's Mornington Peninsula being a new build. "I didn't want it to feel new," she says. "I wanted it to feel casual and relaxed."

The black timber-clad single-storey home she designed and built with her husband Dean has an L-shape floorplan. One wing comprises daughter Sasha's and son Nick's bedrooms, a TV room with a fun built-in banquette (the kids' favourite part of the home), a bathroom and the garage. The simply styled master bedroom is on the return, adjoining the living area, which leads to the dining area and kitchen. The design of this part of the house is particularly clever. The space is essentially open plan, but a wall of joinery, which houses a fireplace, acts as a divider between the living room and the dining area. Each zone feels intimate while remaining cohesive with the rest of the home.

Floor-to-ceiling windows that look out onto the deck and garden span the length of the living and dining areas and, when open, create one large space that's ideal for entertaining. "It's great for when we come back from the beach and have friends around for a drink and a barbecue," Shareen says. After a quick rinse under the outdoor shower (a beach house must-have), of course. →



"WE WANTED A WEEKENDER THAT  
WAS CASUAL, SINGLE STOREY AND WITH  
AN ORIENTATION THAT MAXIMISED LIGHT"

**Sophisticated calm**

The master bedroom is styled simply with bedlinen from Abode Living, a Cross blanket from Share Design and a Lumina Italia "Dephine Terra" floor lamp.





#### Simply beautiful

Soft grey glass mosaics on the walls and floor provide the perfect backdrop for a Kaldewei bath in the ensuite.



#### Mixed finishes

The store room is all about contrasting materials with a recycled concrete sink and raw brass tapware teamed with a pine bench and plywood walls. →

#### who lives here?

Designer Shareen Joel of Shareen Joel Design and Share Design, along with her husband Dean, daughter Sasha, 14, son Nick, 12, and Daisy the cavoodle; [Shareenjoel.com](http://Shareenjoel.com)

**Build timeframe** "We bought an empty block of land in May, 2010," Shareen says. The build took about 16 months and the family moved in just before Christmas 2011.

**Favourite feature** "The kitchen/dining area has such an intimate feel. It faces north so it is lovely and light and has a view over the garden."

**Shared knowledge** As well as her design firm, Shareen produces a wonderful online resource, Share Design, where you can find that elusive item you've been looking for by browsing the extensive product library. Check it out at [Sharedesign.com](http://Sharedesign.com)

Resolved design is a Shareen Joel trademark, and this home is no exception. Every box has been ticked, from the balance of aesthetics and functionality to eco aspects "The orientation and louvred windows throughout ensure an eco-friendly design with cross ventilation," Shareen says. As for the decor, Shareen has specifically kept it neutral. "I love white in a beach house," she says, and so walls throughout are painted in Dulux "Natural White". Materials such as the mafi larch timber floorboards and the carrara marble benchtop in the kitchen will age beautifully, building up a patina over time – the perfect complement to the coastal location where weathered finishes reign.

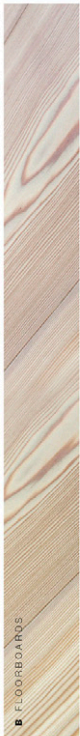
The home is furnished with a blend of vintage and new pieces. In the living room it's all about preloved designer finds: a pair of Kaare Klint "Safari" chairs and a Borge Mogensen "Spanish" armchair are teamed with a Hans Wegner coffee table on top of a flatweave rug. Meanwhile, in the master bedroom you'll find new pieces, such as a Daphne Terra floor lamp by Lumina Italia, Abode Living bedlinen and a Pia Wallace "Cross" blanket from Share Design.

The whole family – and their friends – love spending time here. "We are usually in the kitchen/dining area or entertaining in winter, whereas come the warmer weather, we spend our days at the beach across the road," Shareen says. It's the kind of home where you escape from the busyness of daily life, where you can bunker down in winter or chill out in summer. And at the end of the day, isn't that what beach houses are all about? ●

A STORE ROOM WALL



B FLOORBOARDS



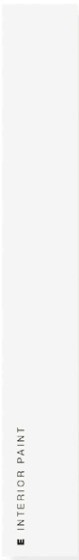
C OUTDOOR CLADDING



D KITCHEN SPLASHBACK

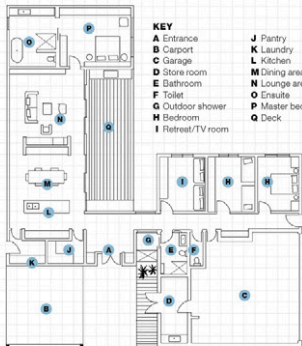


E INTERIOR PAINT



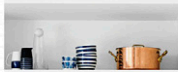
## FINISHES

**WALL PANEL** Imported non-structural **plywood** (A; 2.44m x 1.22m), \$35, Bunnings. **FLOORING** Larch board in **Brushed White Oil** (B), \$181.50 a sq m, Multi. **CLADDING** Glasswood "Palutite Collector" in **Charcoal** (C), \$115.90 a sq m, Bunnings. **KITCHEN SPLASHBACK** Vetricolour Rieazza tile sheet in **16756** (D; 32.2cm), \$115.90 a sq m, Academy Tiles. **INTERIOR PAINT** Dulux Wash & Wear in **Natural White**, \$74.95 for 4L. For stockists, see page 175.



## Kitchen style

Cool white joinery and carrara marble benchtops are warmed up with touches of wood and copper.





**Beach essential**

An outdoor shower to wash off sand after a day at the beach was a must-have.

**Layered light**

Louie Poulsen "PH 5" pendant in Soft White, \$1334, Living Edge. 50cm x 26.5cm.

**Decorative touch**

Tine K Home "Moroccan" hanging tray, \$400, This Design & Living. Diameter 35cm to 50cm.

**Natural leather**

OK Design "September" chair in Mint Green frame, \$2200, Great Dane Furniture. Also available with White frame.

## SHAREEN'S MOODBOARD

*A relaxed beachy vibe accented with new and vintage designer pieces in a beautiful palette of natural materials*

**Ombre fan**

Please AG archive folder in Fluorescent Yellow, \$49.50, Corporate Culture.

**Solid soak**

Kaldewei "Vais" freestanding oval bath, \$4483, Reece.

**Geometric shape**

Hay "Kaleido" trays in Grey and Orange, \$49.50 each, Cult By Corporate Culture. 22cm x 19cm.

**Chopping or serving**

board in Natural, \$50.95, Country Road. 43cm x 23cm.

**Organic cotton**

Pro Voking "Cross" blanket in Black/White, \$200.05, Share Design. 1.6m x 2.4m.

**Skinny stem**

Lumina "Daphne Terra" floor lamp in Metal Silver, \$379, EPC Lighting + Furniture. Height 91cm.

**Hand-painted stripes**

Tine K Home ceramic bowl in Blue, \$27.95, This Design & Living. Diameter 15cm.

**Weave look**

pot, \$19.95, Rogoo. Height 18cm.